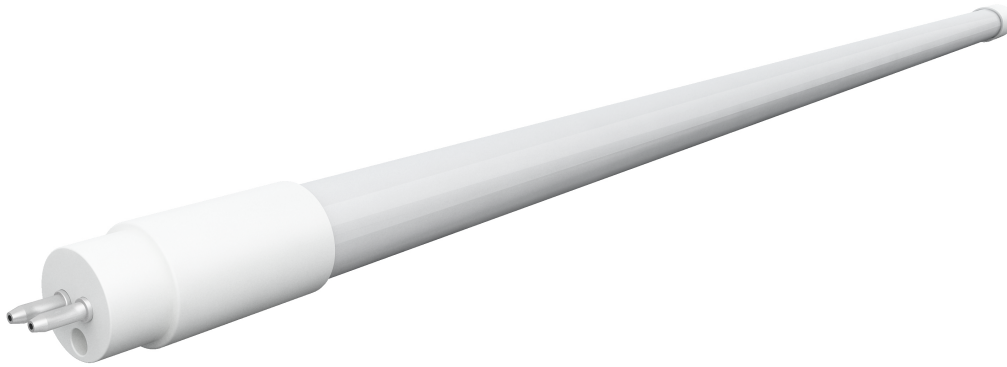


# EWM 28W T5HO 4ft UL/DLC Tube

Replaces 54W T5HO linear fluorescent lamps



Pending

## Features

- High lumen output, high efficacy >120lm/W
- Work with electronic ballast ballasts
- Direct plug and play, no rewiring, directly replace fluorescent tubes
- Instant on, no flicker or buzz
- Mercury free and virtually no UV or IR rays
- Full light output in space with temps +113F (45C) to -4F (-20C)

## Ordering information

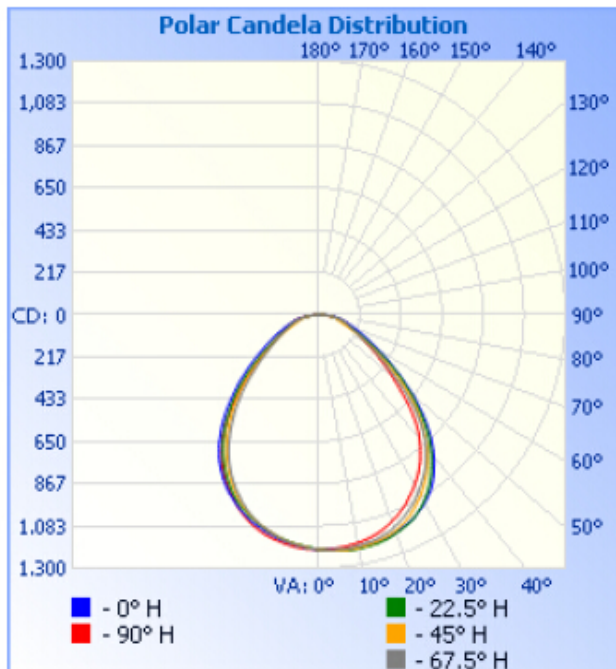
Family	Lgt (in.)	Watts	Driver	Lens Beam	CRI Color	Pins	Sort #
T5	46	15	DBN = Direct Ballast Driven/Compatible, non-dim	FP16 = Frosted Poly, 160 Deg	830 = 80+ CRI, 3000K 840 = 80+ CRI, 4000K 850 = 80+ CRI, 5000K	G5 G5 Bi-pin, 2-end	214

Example: T5-46-15 - DBN-FP16-840-G5- 214

# SPECIFICATIONS

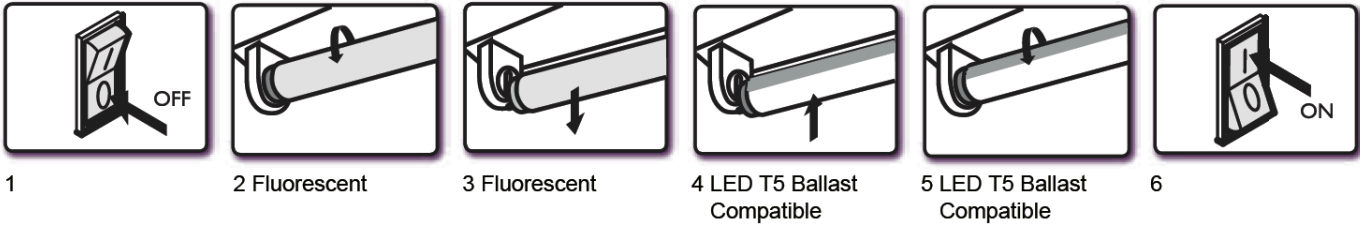
WATTAGE	24 (28W w/ballast draw)
LUMENS	3200lm±10%
LUMENS PER WATT	>120
BEAM ANGLE	160°
COLOR TEMPERATURES	3000K, 4000K, 5000K
INPUT VOLTAGE	Ballast Dependent
HERTZ	50/60HZ
CRI	>80
LED L70 LIFETIME	50,000hrs
PIN OPTIONS	G5 bi-pin
CONTROL OPTIONS	No dimming control (unless ballast is dimming)
DRIVER	Ballast Driven (will not operate without ballast)
DIMENSIONS	46"
WEIGHT	0.2kg
CERTIFICATIONS	UL/cUL, DLC (pending)
WARRANTY	5 years

## Photometric



# Installation

## Installation Guide



## Instruction

1. Switch-off power to the luminaire
2. Remove diffuser (if provided)
3. Remove the existing fluorescent lamps from the luminaire.  
- Note: Verify the fluorescent tube type is HO fluorescent T5
- 4-5. Install the LED T5 Ballast Compatible lamp (One for each fluorescent lamp removed, ensure pins are firmly seated in lampholders).  
Replace diffuser (if removed in step 2).
6. Switch on power to the luminaire.

**CAUTION** – IF THE LAMP OR LUMINAIRE EXHIBITS UNDESIRABLE OPERATION (BUZZING, FLICKERING, ETC.), IMMEDIATELY TURN OFF POWER, REMOVE LAMP FROM LUMINAIRE AND CONTACT THE MANUFACTURER

**CAUTION** – RISK OF FIRE. DO NOT INSTALL IN A PRE-HEAT LUMINAIRE

**WARNING:** RISK OF FIRE, USE ONLY IN PLACE OF FLUORESCENT LAMPS SPECIFIED ON LABEL. SEE INSTRUCTIONS.

THIS LAMP ONLY OPERATES ON ELECTRONIC BALLASTS. IF LAMP DOES NOT LIGHT WHEN THE LUMINAIRE IS ENERGIZED, REMOVE LAMP FROM LUMINAIRE AND CONTACT LAMP MANUFACTURER OR QUALIFIED ELECTRICIAN

THIS PRODUCT MAY CAUSE INTERFERENCE TO RADIO EQUIPMENT AND SHOULD NOT BE INSTALLED NEAR MARITIME SAFETY COMMUNICATIONS EQUIPMENT OR OTHER CRITICAL NAVIGATION OR COMMUNICATION EQUIPMENT OPERATING BETWEEN 0.45 – 30MHZ.

## Operating Cost Comparison

<b>54WT5HO</b> 62W (incl. ballast) 24,000	<b>EWM T5</b> <b>28W</b> <b>50,000</b>	Comparison 55% reduction 2x longer life- less maintenance!
---	--	--

*Product enhancements may result in specification changes without notice. Contact us for the latest information*