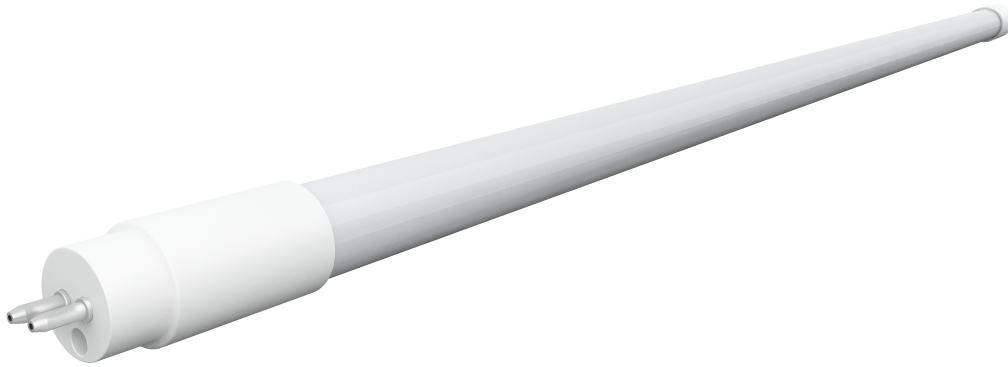


EWM 12W T5HE 3ft UL Tube

Replaces 21W T5 linear fluorescent lamps



Features

- High lumen output, high efficacy >120lm/W
- Works with electronic ballast ballasts
- Direct plug and play, no rewiring, directly replace fluorescent tubes
- Instant on, no flicker or buzz
- Mercury free and virtually no UV or IR rays
- Full light output in space with temps +113F (45C) to -4F (-20C)

Ordering information

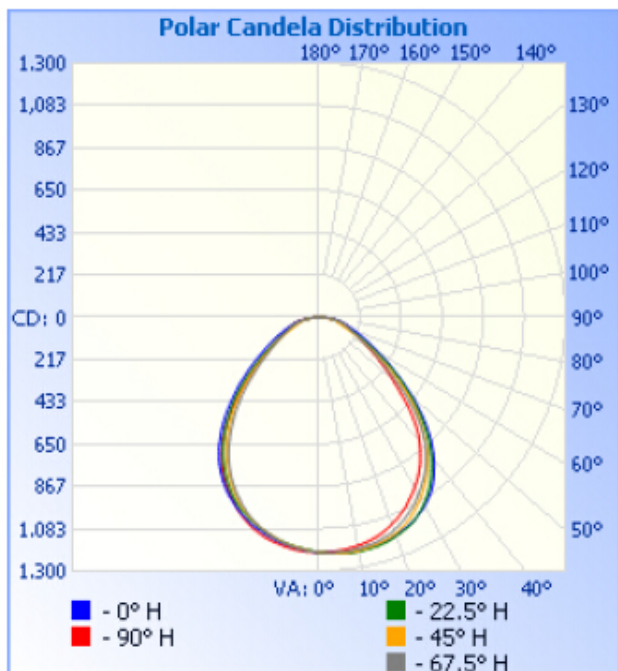
Family	Lgt (in.)	Watts	Driver	Lens Beam	CRI Color	Pins	Sort #
T5	34	12	DBN = Direct Ballast Driven/Compatible, non-dim	FP16 = Frosted Poly, 160 Deg	830 = 80+ CRI, 3000K 840 = 80+ CRI, 4000K 850 = 80+ CRI, 5000K	G G5 Bi-pin, 2-end	214

Example: T5-34-12-DBN-FP16-840-G5- 214

SPECIFICATIONS

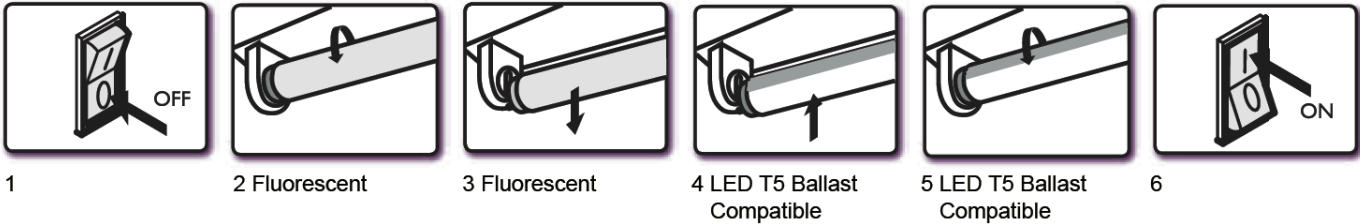
WATTAGE	12
LUMENS	1420lm±10%
LUMENS PER WATT	>120
BEAM ANGLE	160°
COLOR TEMPERATURES	3000K, 4000K, 5000K
INPUT VOLTAGE	Ballast Dependent
HERTZ	50/60HZ
CRI	>80
LED L70 LIFETIME	50,000hrs
PIN OPTIONS	G5 bi-pin
CONTROL OPTIONS	No dimming control (unless ballast is dimming)
DRIVER	Ballast Driven (will not operate without ballast)
DIMENSIONS	34"
WEIGHT	0.2kg
CERTIFICATIONS	UL/cUL
WARRANTY	5 years

Photometric



Installation

Installation Guide



Instruction

1. Switch-off power to the luminaire
2. Remove diffuser (if provided)
3. Remove the existing fluorescent lamps from the luminaire.
- Note: Verify the fluorescent tube type is HO fluorescent T5
- 4-5. Install the LED T5 Ballast Compatible lamp (One for each fluorescent lamp removed, ensure pins are firmly seated in lampholders).
Replace diffuser (if removed in step 2).
6. Switch on power to the luminaire.

CAUTION – IF THE LAMP OR LUMINAIRE EXHIBITS UNDESIRABLE OPERATION (BUZZING, FLICKERING, ETC.), IMMEDIATELY TURN OFF POWER, REMOVE LAMP FROM LUMINAIRE AND CONTACT THE MANUFACTURER

CAUTION – RISK OF FIRE. DO NOT INSTALL IN A PRE-HEAT LUMINAIRE

WARNING: RISK OF FIRE, USE ONLY IN PLACE OF FLUORESCENT LAMPS SPECIFIED ON LABEL. SEE INSTRUCTIONS.

THIS LAMP ONLY OPERATES ON ELECTRONIC BALLASTS. IF LAMP DOES NOT LIGHT WHEN THE LUMINAIRE IS ENERGIZED, REMOVE LAMP FROM LUMINAIRE AND CONTACT LAMP MANUFACTURER OR QUALIFIED ELECTRICIAN

THIS PRODUCT MAY CAUSE INTERFERENCE TO RADIO EQUIPMENT AND SHOULD NOT BE INSTALLED NEAR MARITIME SAFETY COMMUNICATIONS EQUIPMENT OR OTHER CRITICAL NAVIGATION OR COMMUNICATION EQUIPMENT OPERATING BETWEEN 0.45 – 30MHZ.

Operating Cost Comparison

21WT5 24W (incl. ballast) 24,000	EWM T5 12W 50,000	Comparison 50% reduction 2x longer life- less maintenance!
---	--	--

Product enhancements may result in specification changes without notice. Contact us for the latest information